

## TBB212707

### Product overview

Use this 7 drawers tool cabinet to provide safe and convenient storage for your most used tools. This tool box chest trolley has smooth sliding ball bearing drawer slides, chemical resistant powder coating, smooth powder coating surface is waterproof and easy to clean. The rolling tool cabinet has multiple drawers, which can be opened to load various types of tools, and the top can be used to store daily items. A secure key locking system keeps your tools safe. The 5" casters are strong, durable, heavy-duty and easy to move the tool trolley.

1. The full extension ball bearing drawer slides stretch very smoothly.
2. Multiple drawers can hold different kinds of tools.
3. The chemical-resistant powder coating is waterproof, rust-proof and easy to scrub.
4. All drawers are equipped with EVA non-slip drawer liners to reduce damage to tools and scratches to drawers.
5. The key lock fixes your metal tool cabinet to ensure safe tool storage
6. The tool storage cabinet is equipped with 5" casters, which are strong, durable, and have good bearing capacity, making it very smooth to move.
7. Each tool storage trolley is equipped with a side handle, which is easy to push.
8. The logo and color of tool cabinet trolley can be customized.

### Product details



# Changzhou City Hongfei Metalwork Corporation



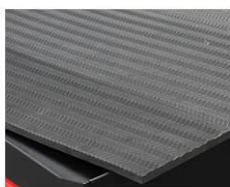
Ball bearing drawer slider



Barrel lock



Curve drawer hand



Top with 10mm eva



Tubal side handle



PVC 5" x1.25 fixed castor



PVC 5" x1.25 swiveled castor

## Specification

|                             |   |              |                      |                      |
|-----------------------------|---|--------------|----------------------|----------------------|
| <b>TBB212707</b>            | <b>7 Drawers Tool Cabinet</b>                   |              |                      |                      |
|                             | <b>width</b>                                    | <b>depth</b> | <b>height</b>        | <b>unit</b>          |
| <b>overall</b>              | 678   | 460          | 836                  | mm                   |
| <b>overall with castors</b> | 678   | 460          | 993                  | mm                   |
| <b>package</b>              | 740   | 520          | 900                  | mm                   |
| <b>5 drawers</b>            | 567   | 398          | 65                   | mm                   |
| <b>2 drawers</b>            | 567   | 398          | 144                  | mm                   |
|                             | <b>N.W.</b>                                     | <b>G.W.</b>  | <b>20' container</b> | <b>40' container</b> |
|                             | 48.3kg  | 53.1kg       | 88 pcs               | 181 pcs              |
| <b>Wall thickness</b>       | overall: 0.8mm, drawer: 0.6mm, wheel seat:1.5mm |              |                      |                      |
| <b>Slides</b>               | 16"*35/45 ball bearing drawer slides            |              |                      |                      |
| <b>Wheels</b>               | 5"*2"PP   |              |                      |                      |
| <b>OEM/ODM</b>              | Acceptable                                      |              |                      |                      |
| <b>Certificate</b>          | ISO9001   |              |                      |                      |
| <b>Experience</b>           | Since 1992                                      |              |                      |                      |

